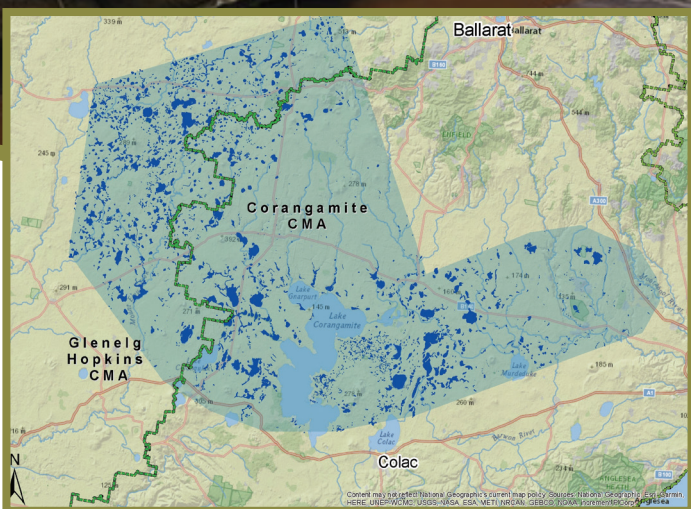


# VVP Landscape Wetland Restoration Program

Funding is available for wetlands on the Victorian Volcanic Plain, within the Corangamite and Glenelg Hopkins CMA regions.



## Is your wetland drained?

Many wetlands across the Victorian Volcanic Plain have been drained.

Wetland plants and animals rely on water lasting well into spring and early summer.

By removing the impacts of drains, you can make sure wetland dependent species have water when they need it most.

If you have a site you're interested in working with, get in touch to hear about what might be possible and what sort of funding is available.

### Please contact:

Lachlan Farrington 0401 208 717  
[lachlan.farrington@ngt.org.au](mailto:lachlan.farrington@ngt.org.au)

This project is funded with the support of the Victorian Government



Environment,  
Land, Water  
and Planning